

KB-S Shaft connection for round and square shafts

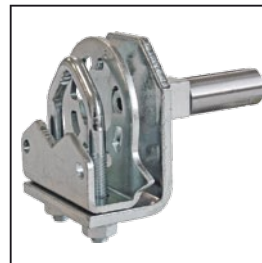
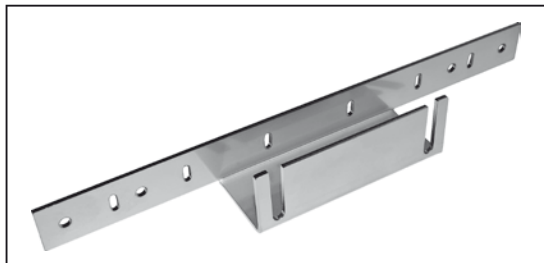
For damper shafts Ø 10...20 mm and □ 10...16 mm adaptable to ...**Max** actuators size S

Subject to change!

Product views

KB-S

Anti-twist protection bracket



Force-fitted shaft connection – Mounting of clamp “KB-S”

The actuators are axially symmetric developed. In case of spring return function the safety position must be selected by turning the actuator to 180°.

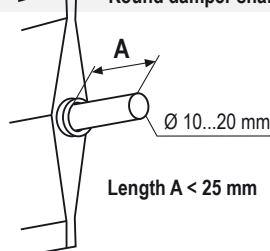
Mounting:

1. Insert mounting clamp into drive shaft and screw tightly from opposite side with the socket wrench.
2. Screw in two screws functioning as an anti-twist locking device.
3. Install mounting bracket at the damper.
4. Mount actuator on the damper shaft, adjust it in the mounting bracket and install it in such way that it can implement an oscillating motion for the reconciliation of the non-centric connection. Tighten the clamp with the wrench socket.

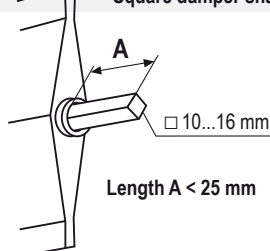
Note:

The drive shaft is selflocking produced and may only be mechanically adjusted either with the provided socket wrench or the optional accessory “HV-S” manual override (turn off power supply). External force applied to the shaft can lead to mechanical damage of the actuator!

Round damper shafts

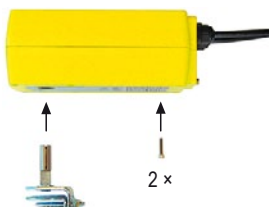


Square damper shafts



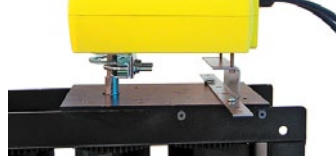
1. Pre-assemble mounting clamp

2. Fixing



3. Assemble mounting bracket

4. Mounting to damper



Technical data

Material	Steel galvanized
Anti-twist bracket	Stainless steel V2A / AISI 304 / DIN EN 1.4301
Screws	2 screws M4 × 20 mm, galvanized
Self tapping screws	2 screws 4.2 × 13 mm, galvanized

Dimensions

Dimensioning in mm

